

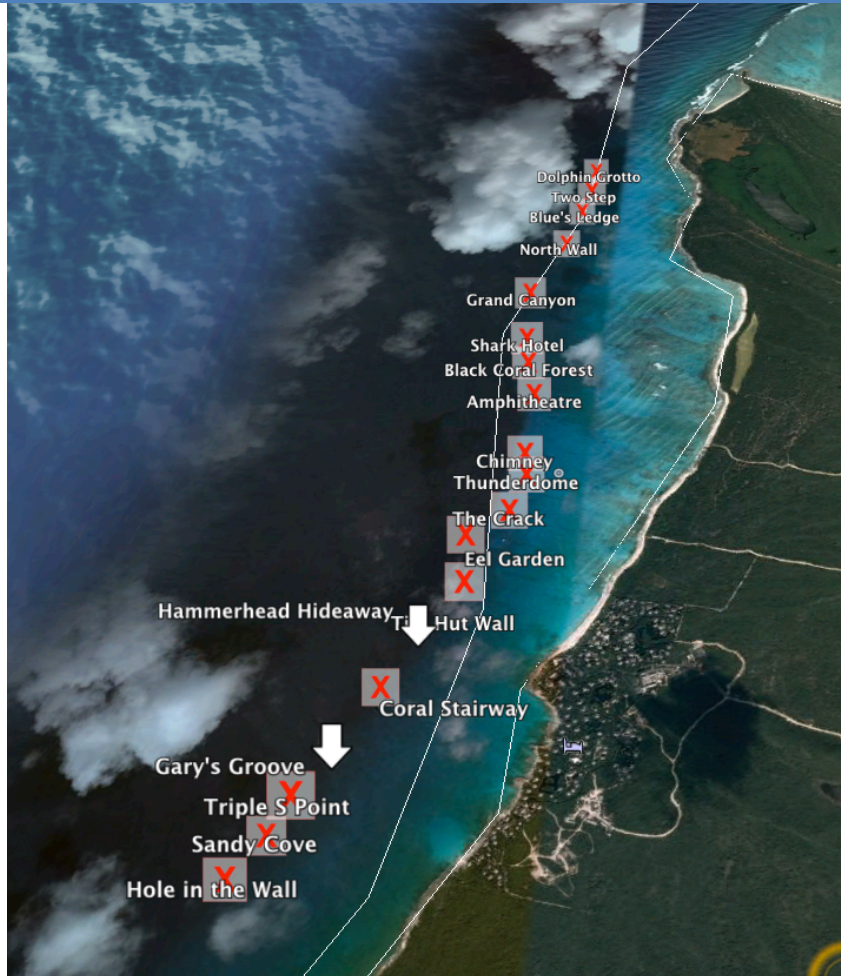
Providenciales North Side Sites

Site Name	GPS Coordinates	Approx. Depth	Anchor Type
Sunset Strip	21° 49.812' N, 072° 10.430' W	35 ft	Rock Pin
Shark Alley	21° 49.750' N, 072° 10.450' W	35 ft	Helix Anchor
Fifi's Folly	21° 49.647' N, 072° 10.534' W	35 ft	Helix Anchor
Catacombs	21° 49.500' N, 072° 10.672' W	35 ft	Helix Anchor
Two Sharks	21° 49.428' N, 072° 10.749' W	40 ft	Helix Anchor
Half Moon Bay	21° 49.320' N, 072° 10.910' W	40 ft	Helix Anchor
Crocodile	21° 49.031' N, 072° 11.040' W	40 ft	Helix Anchor
Coral Gables	21° 48.980' N, 072° 11.070' W	30 ft	Helix Anchor
Cathedral	21° 48.920' N, 072° 11.110' W	30 ft	Helix Anchor
Piranha Cove	21° 48.890' N, 072° 11.176' W	48 ft	Helix Anchor
Pinnacles	21° 48.850' N, 072° 11.220' W	35 ft	Helix Anchor
Graceland	21° 48.800' N, 072° 11.228' W		NONE
Grouper Hole	21° 48.761' N, 072° 11.365' W	40 ft	Helix Anchor
Grotto	21° 48.567' N, 072° 11.602' W	40 ft	Helix Anchor
Arawak	21° 48.389' N, 072° 12.003' W	60 ft	Rock Pin
Boneyard	21° 48.309' N, 072° 12.105' W	60 ft	Rock Pin
Coral Cable	21° 48.240' N, 072° 12.248' W	50 ft	Helix Anchor
Aquarium West	21° 48.507' N, 072° 13.558' W	60 ft	Rock Pin
Southwind Wreck	21° 48.602' N, 072° 14.280' W		NONE
WE Wreck	21° 48.653' N, 072° 14.245' W	110 ft	Chain tied into wreck
Shark Hole	21° 48.680' N, 072° 14.448' W	60 ft	Rock Pin



Northwest Point Sites

Site Name	GPS Coordinates	Approx. Depth	Anchor Type
Canyons	21° 52.720' N, 072° 19.780' W		NONE
Dolphin Grotto	21° 51.345' N, 072° 20.406' W	45 ft	Helix Anchor
Two Step	21° 51.251' N, 072° 20.410' W	40 ft	Helix Anchor
Blue's Ledge	21° 51.162' N, 072° 20.427' W	45 ft	Helix Anchor
North Wall	21° 51.025' N, 072° 20.454' W	45 ft	Rock Pin
Grand Canyon	21° 50.826' N, 72° 20.522' W	45 ft	Rock Pin
Shark Hotel	21° 50.660' N, 072° 20.510' W	45 ft	Stainless U-Bolt
Black Coral Forest	21° 50.575' N, 072° 20.496' W	45 ft	Rock Pin
Ampitheatre	21° 50.470' N, 072° 20.470' W	35 ft	Stainless U-Bolt
Chimney	21° 50.287' N, 072° 20.468' W	40 ft	Helix Anchor
Thunderdome	21° 50.225' N, 072° 20.457' W	30 ft	Helix Anchor
The Crack	21° 50.125' N, 072° 20.480' W	40 ft	Helix Anchor
Eel Garden	21° 50.060' N, 072° 20.460' W	40 ft	Stainless U-Bolt
Tiki Hut Wall	21° 49.940' N, 072° 20.544' W	45 ft	Rock Pin
Hammerhead Hideaway	21° 49.815' N, 072° 20.612' W	45 ft	Rock Pin
Coral Stairway	21° 49.651' N, 072° 20.671' W	45 ft	Stainless U-Bolt
Gary's Groove	21° 49.556' N, 072° 20.717' W	47 ft	Rock Pin
Triple S Point	21° 49.477' N, 72° 20.769' W	45 ft	Rock Pin
Sandy Cove	21° 49.409' N, 72° 20.793' W	45 ft	Rock Pin
Hole in the Wall	21° 49.330' N, 72° 20.820' W	45 ft	Rock Pin



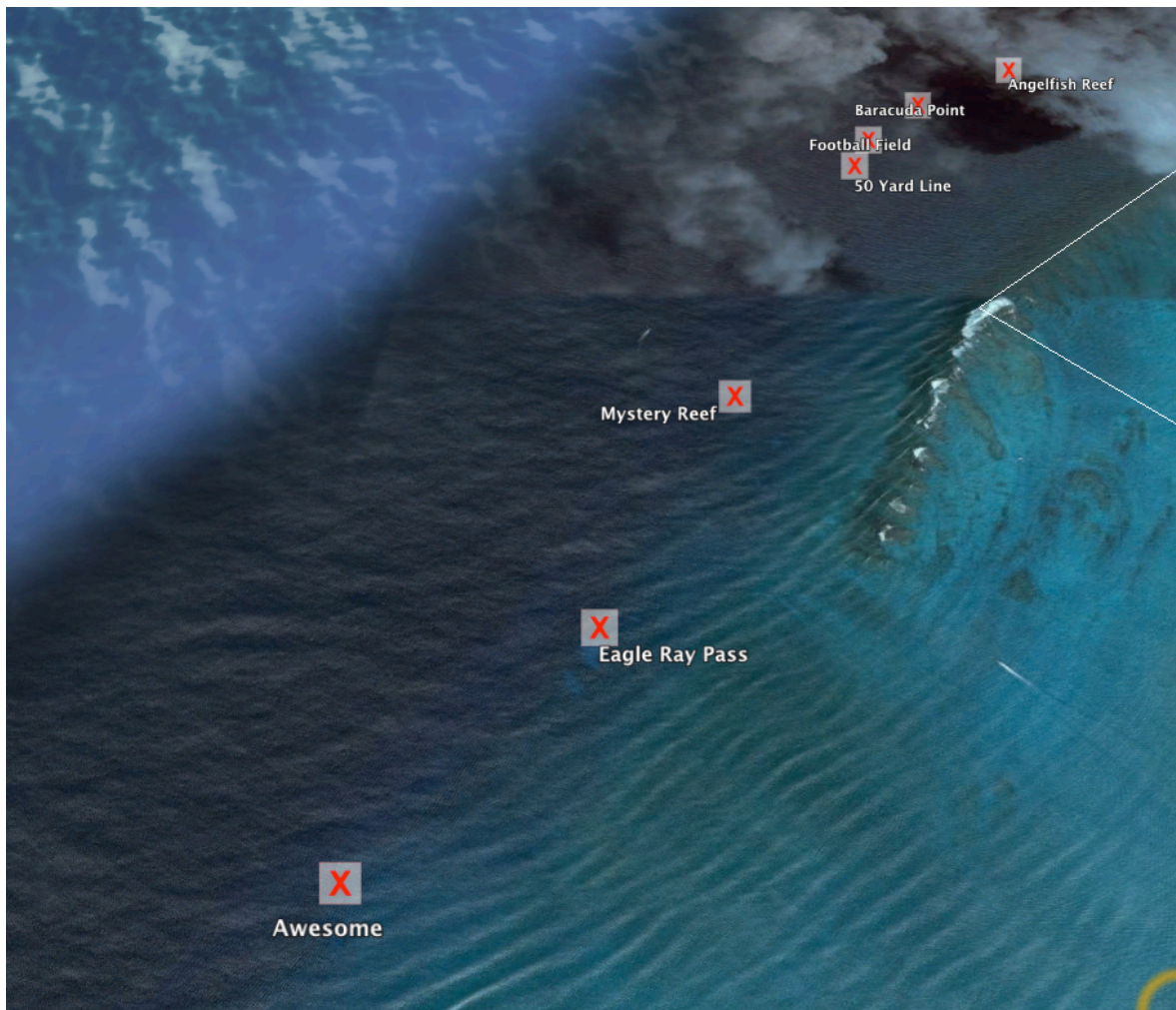
West Caicos Sites

Site Name	GPS Coordinates	Approx. Depth	Anchor Type
Land of Giants	21° 43.020' N, 072° 27.380' W		NONE
Midnight Manta	21° 42.020' N, 072° 28.020' W		NONE
Highway to Heaven	21° 41.442' N, 072° 28.191' W	50 ft	Helix Anchor
Stingray Deep	21° 41.189' N, 072° 28.471' W	48 ft	HD Helix with 5ft ext
Elephant Ear Canyon	21° 40.996' N, 072° 28.190' W	50 ft	Helix Anchor
Devil's Horn	21° 40.890' N, 072° 28.219' W	55 ft	HD Helix with 5ft ext
Stingray Bay	21° 40.762' N, 72° 28.194' W	50 ft	HD Helix with 2ft ext
The Gully	21° 40.617' N, 072° 28.180' W	50 ft	Stainless U-Bolt
Boat Cove	21° 40.370' N, 072° 28.150' W	45 ft	Helix Anchor
Pickering's Place	21° 40.506' N, 72° 28.183' W	50ft.	HD Helix with 5ft ext
Rock Garden Interlude	21° 40.229' N, 072° 28.184' W	50 ft	Helix Anchor
Rock Garden	21° 40.126' N, 072° 28.198' W	50 ft	HD Helix with 2ft ext
Magic Mushroom	21° 39.902' N, 072° 28.244' W	45 ft	Stainless U-Bolt
Driveway	21° 39.540' N, 072° 28.240' W	40 ft	Stainless U-Bolt
Yankee Town	21° 39.763' N, 72° 28.217' W	42 ft	Rock Pin
Brandywine	21° 39.340' N, 072° 28.290' W	45 ft	Helix Anchor
Conch City	21° 39.174' N, 072° 28.359' W	48 ft.	Rock Pin
Jagged Edge	21° 38.996' N, 72° 28.402' W	45 ft	Rock Pin
Stark Reality	21° 38.849' N, 72° 28.475' W	53 ft.	Rock Pin
Whiteface (The Anchor)	21° 38.740' N, 072° 28.500' W	45 ft	Stainless U-Bolt
Sunday Service	21° 38.120' N, 072° 28.860' W		NONE
Isle's End	21° 37.990' N, 072° 28.930' W		NONE



Pine Cay Area Sites

Site Name	GPS Coordinates	Approx. Depth	Anchor Type
Black Durgeon Reef	21° 52.386' N, 72° 8.042' W		NONE
Awesome	21° 52.980' N, 72° 7.510' W	40 ft	Helix Anchor
Eagle Ray Pass	21° 53.340' N, 72° 7.240' W	40 ft	Helix Anchor
Mystery Reef	21° 53.760' N, 72° 07.079' W	45 ft	Rock Pin
50 Yard Line	21° 54.311' N, 72° 06.895' W	50 ft	Rock Pin
Football Field	21° 54.384' N, 72° 6.870' W	80 ft	Helix Anchor
Baracuda Point	21° 54.486' N, 72° 06.777' W	55 ft	Rock Pin
Angelfish Reef	21° 54.594' N, 72° 06.600' W	45 ft	Rock Pin



French Cay Area Sites

Site Name	GPS Coordinates	Approx. Depth	Anchor Type
Double D	21° 29.385' N, 72° 12.424' W	45 ft	Helix Anchor
Rock and Roll	21° 29.520' N, 72° 13.130' W	45 ft	Stainless U-Bolt
G Spot	21° 29.552' N, 72° 12.926' W	45 ft	Stainless U-Bolt
Jules Junction	21° 29.757' N, 72° 12.676' W	45 ft	Rock Pin
Half Mile Reef	21° 29.880' N, 72° 12.447' W	45 ft	Rock Pin
Quarter Mile Reef	21° 29.920' N, 72° 12.380' W	45 ft	Rock Pin
Dewey's Delight	21° 30.056' N, 72° 11.883' W	45 ft.	Double Rock Pin
Nightengale	21° 29.938' N, 72° 11.190' W	42 ft	Rock Pin
Lions Den	21° 30.011' N, 72° 10.896' W	49 ft	Rock Pin

